

timba®

FLOOR

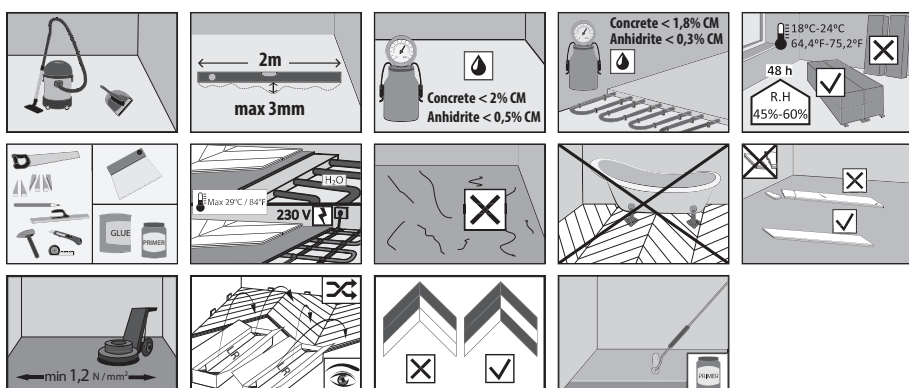
CE		20
B2B Wood Products Ltd / Timba Floor Unit F10, Tanfield Lea Business Centre, North Industrial Estate, Stanley, County Durham, DH9 9DB, United Kingdom		
BVU No. BUA 3W 01/12/2018/T/CH		
EN 14342:2013 Three-layer flooring board		
Essential features	Performance	Harmonised technical specifications
Reaction to fire	Dfl – s1	EN 14342:2013
Minimum density	500 kg/m³	
Minimum thickness	14 mm	
Formaldehyde emissions	E-1	
Thermal conductivity	0.14 W/mK	
Biological stability	NPD	

CHEVRON

FLOOR

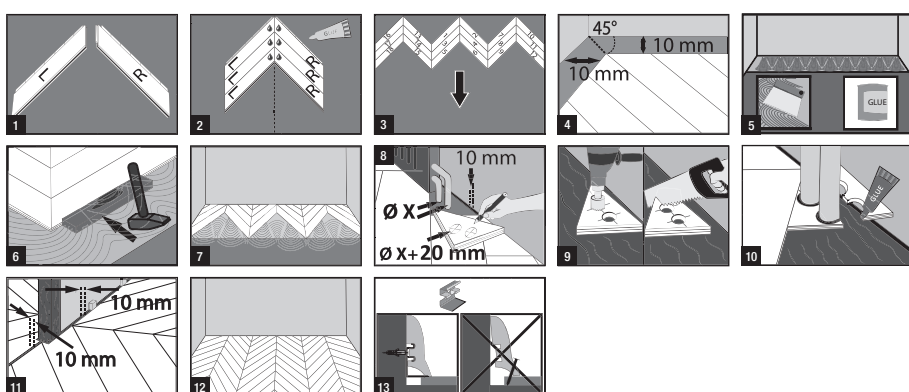
INSTALLATION

PREINSTALLATION

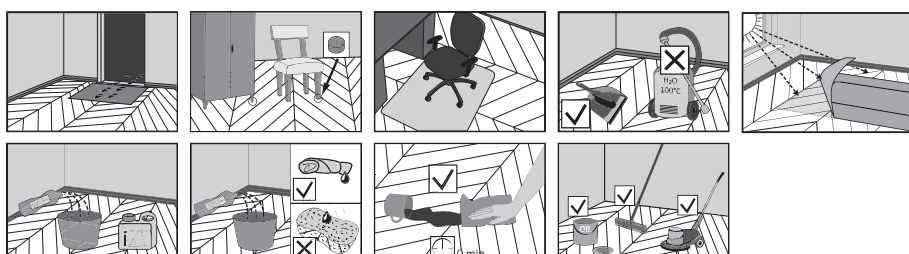


TONGUE & GROOVE

FRENCH HERRINGBONE TYPE



CAUTION!



ATTENTION!

The installation of glue-down hardwood flooring should be done by a professional flooring company. With a DIY installation, you run the risk of damaging the wood surface, leaving glue stains or fitting the flooring incorrectly. Use glue-down adhesives and primers designed for glue-down wooden floors. We recommend grinding the subfloor layer before beginning installation. The cement subfloor should be cleaned of calcium deposits. The engineered wood flooring should be cared for using only agents intended for this purpose. Manufacturer bears no responsibility for the effects of using agents made by other manufacturers. **ATTENTION:** Before applying any third party care product be sure to test it on a concealed area of the floor to assess whether or not there is a negative reaction of lacquer on the floorboard (for example, discoloration or peeling). Regular care of lacquer floors conceals minor wear and tear of everyday use. The greatest enemies of wooden floors are water and sand. In case of soiling of the floor, these should be carefully and gently removed. Regular care of oiled floors conceals minor wear and tear of everyday use. For detailed information on floor care, please go to www.timbafloor.com.