

General Guidelines Design Floors Click



Prior to installation

Visual inspection

Please inspect product prior to installation. Check that the colours correspond to those ordered, the quantities are correct and there is no visible damage to the boxes. Check the vinyl planks or tiles during installation for any visible defects. Do not install any planks or tiles that display any imperfections.

We recommend that you always use materials from a single production batch for each installation, as we cannot guarantee a shade match between different batches.

National regulations:

Site conditions and installation must always comply with the relevant national regulations and installation standards.

Storage & transport

Cartons should be stored and transported on a flat surface in neat stacks, always store the cartons flat and never put them on-end. Do not store the cartons in very cold (less than 2°C) or very warm (more than 40°C) or humid places.

Suitability

- Design Floors Click can be laid on concrete, cementitious screed, anhydrite (calcium sulphate), timber, plywood, particleboard and ceramic tiles, which have been suitably prepared (see Floor Preparation).
- Design Floors Click can be used with traditional water based underfloor heating and cooling systems. Electric wire systems are not recommended unless the system is encased in a minimum of 9mm of suitable levelling compound. Direct contact with wired

heating systems must be avoided. If in doubt seek further advice.

- Design Floors Click is only suitable for indoor installation.
- Seasonal temperature conditions: Design Floors Click can be used in any indoor situation, such as temperature controlled conservatories and holiday homes. Keep under all conditions the temperature between 6C° and 35C° . Avoid rapid temperature increases of more than 5C° per 12 hours.
- For commercial applications where roller castor chairs or heavy rolling loads are to be used we strongly recommend the use of Design Floors Dryback. However, if you do want to use Design Floors Click, please contact the Design Floors Technical Support Team.

Composition, construction and quality of the subfloor

Knowledge of the composition and construction provides valuable information that allows you to correctly check the acceptable humidity, compressive and tensile strength of the subfloor. In addition it tells you what type of floor preparation, levelling compound, and possible moisture barrier you may need during the installation process. When there is ambiguity or doubt about the quality or composition of your subfloor check with your floor preparation, levelling compound manufacturer/supplier.

Subfloor preparation

Irregularities in the subfloor

Good preparation is essential for trouble-free installation. It is vital for an excellent Design Floors Click finish. The appearance of Design Floors Click will only be as good as the quality of the base over which it is installed. Any irregularities in the subfloor will show through the finished floor and must be suitably prepared before installation.

The subfloor must be hard, smooth, clean and dry, as well as being free from defects and fit for purpose. When required, scrape off and remove old adhesives and loose laying levelling compound. Make sure the subfloor is flat and free from chemical substances and other contamination.

Unevenness of the subfloor may not be greater than 2mm measured over a width of 200cm.

A suitable plywood/levelling compound should be selected to ensure that no irregularities show through to the surface of the finished floor. However, the selection of suitable materials, including plywood, smoothing/ levelling compounds and any ancillary products, is dependent upon the occupational use of the area and must be agreed by the supplier of the preparative materials and the flooring contractor. All floor preparation materials used must be used in accordance with the manufacturer's recommendations and in accordance with the national standards for resilient floorcoverings.

The moisture content of the subfloor

- Unheated cementitious screeds less than 2.0CM% - 75% RH (UK)
- Underfloor heated cementitious screeds less than 1.8CM% - 75% RH (UK)
- Unheated anhydrite (calcium sulphate) screeds less than 0.5CM%
- Underfloor heated anhydrite (calcium sulphate) less than 0.3CM%

Direct-to-earth concrete and stone subfloors must have an effective damp proof membrane (DPM) in accordance with the national standards for the installation of resilient floorcoverings. Follow manufacturer's detailed instructions for the installation of a surface applied DPM and the use of levelling compound. An overview of recommended manufacturers and suppliers can be provided by Design Floors.



Important

Floor installation should not begin until the installer has assessed and approved the subfloor and installation conditions

Acclimatisation

Design Floors Click must acclimatise in the room of installation, or an equivalent area for at least 24 hours prior to installation, or until such time as the product has achieved an ambient

temperature. Again, this is a minimum temperature of 18° C and a maximum of 27° C.

- Unpack the Design Floors Click and check all planks or tiles in daylight for possible defects or discrepancies in colour.
- Stack the plank or tiles in straight piles away from heating, cooling or windows with direct intense sunlight. This is to achieve a gradual acclimatisation.

Temperature condition before installation

Design Floors Click should be installed with a room temperature of between 18° C and 27° C and a floor temperature of above 15° C.



Installations in areas colder than recommended will influence the installation properties of Design Floors Click. The planks or tiles will be less flexible, cutting will be harder and small pieces difficult to cut out. The lower the temperature, the more difficult the installation. For installation in areas warmer than recommended, we advise consultation with your local retailer/ installer on how to create the appropriate installation conditions.

Starting installation

Temperature condition during installation

A constant temperature, fluctuating no more than 5° C per day, not below the required 18° C room temperature and 15° C subfloor temperature, should be maintained 24 hours before, during and 72 hours after installation.

Underfloor heating

Design Floors Click can be used with traditional water based underfloor heating systems, provided there is a constant room temperature of 18° C for the acclimatisation period, installation and for 72 hours after installation. 24 hours after installation the underfloor heating must be gradually increased by increments of 5° C per day until it reaches the standard operating temperature conditions, with a maximum operating temperature of 27° C. For the suitability of the system please check the manufacturer's instructions.

Underfloor cooling

Design Floors Click can also be installed over floor cooling systems. However, the supply temperature of the cooling water must not be reduced below the dew point temperature. Temperatures below this point will produce condensation and can therefore damage the floor covering. Thermostats in the room must never be set at a temperature which is more than 5° C lower than the room temperature.

Recommended underlay

Installing the correct underlay is paramount. Whether you require excellent sound control, a solution in a heavy duty environment or a base for general purposes, Xtrafloor has an underlay suitable for your requirements.

Xtrafloor™ Base: Residential use

- Improved sound insulation ($\Delta L_w = 13$ dB with 4.5 mm Design Floors Click)
- Protective foil and lightly tackified film for easy installation.
- Suitable for underfloor heating and cooling
- Provides excellent dimensional stability
- Not suitable for roller castor chairs or heavy duty use



Xtrafloor™ Flex Pro: Heavy duty use

- Improved sound insulation ($\Delta L_w=13$ dB with 4.5 mm Design Floors Click)
- Protective foil and pressure sensitive adhesive film for easy installation.
- Suitable for underfloor heating and cooling
- Provides excellent dimensional stability
- Suitable for roller castor chairs & rolling loads up to 250kg



Xtrafloor™ Silent: superior sound insulation for residential use

- Improved sound insulation ($\Delta L_w=21$ dB and $\Delta L_{lin}=10$ dB with 4.5 mm Design Floors Click)
- Anti-slip coating for quick and easy installation
- Suited for underfloor heating and cooling
- Not suitable for roller castor chairs or heavy duty use and areas with exposure to direct sunlight e.g. conservatories or excessive fluctuations in temperature.



Xtrafloor™ Base & Xtrafloor™ Flex Pro, as recommended above, can smooth out small irregularities of a **maximum 5mm wide and 2mm deep**. This allows for installation over existing floor coverings, such as ceramic tiles, linoleum, compact PVC floors and wooden floorboards.

Installation of underlay

Lay the sheets butted, edge-to-edge, at a 90 angle to the laying direction of the new floorcovering. Xtrafloor Base and Xtrafloor Flex-Pro is to be laid PET Film side up and Xtrafloor Silent is to be laid anti-slip side up. There is no need to fix one sheet to another. A section at a time, separate the PET-film from the underlay sheet (not applicable for Xtrafloor Silent) and begin laying your new floor according to the fitting instructions. Do not use primer or other adhesive.

Required expansion gap

- Design Floors Click is a “floating” floor. The panels should not be glued or fixed to the subfloor below.
- A 5mm expansion joint must be incorporated at the perimeter of the room/area.
- For areas larger than 200 m², it is recommended to create an expansion joint of 10mm around the perimeter of the room/area.
- In addition, should a single wall or run be longer than 20 linear meters, then a 5mm expansion gap

- should be allowed within the floor surface. It is recommended that an expansion gap is left between doorways, especially where there are temperature differences between different areas.

⇒ For smart solutions to cover the expansion gaps, see 'Finishing your floor'

Click installation step by step

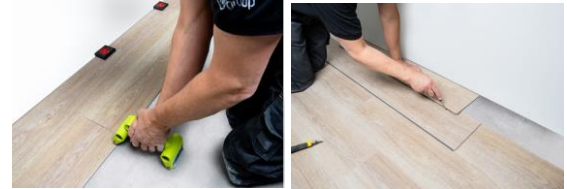
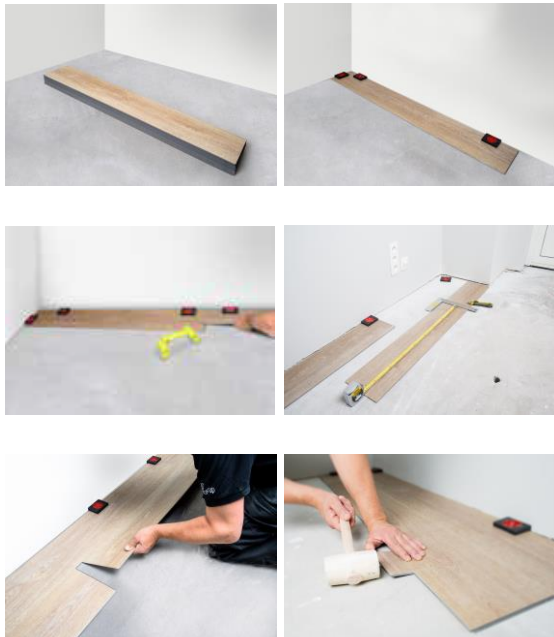
Recommended tools

- Tape measure
- Pencil
- Set square
- Utility knife
- Hand roller
- Recoil- or rubber hammer
- Tapping block
- Spacers for setting the rows in an uneven wall



1. The Design Floors Click system panels can be joined in two different ways, either tongue-in-groove or groove-under-tongue. The simplest procedure, however, is groove-under-tongue, working from left to right.
2. The advantage of the Design Floors Click system is that it allows you to choose your own starting position. You can start in the middle of the room/area and work to both sides, or start at the wall and work your way in.
3. Determine the installation direction of the Design Floors Click. Measure the room carefully to determine whether the first row of panels needs to be narrowed. If not, the lower groove lip of the first row of panels needs to be removed. Use a utility knife to neatly cut off the lower groove lip.
4. Begin by laying the first row in the corner of the room on your left hand side as you are looking at the wall. Always work from left to right and with the tongue towards yourself.
5. Lay the first row in a straight line and click the head ends together. Put the short side of the profile into the head end of the previous panel and press the panel downwards. It is recommended to use a hand roller for connecting the head ends so that the joint fits securely. We advise to use the Xtrafloor roller.
6. Use the spacers to fill out the contour of the wall so that the panels do not move and are 100% installed.

7. For the last piece, measure the last plank so that the required expansion gap is maintained. Do not lay the panel completely tight to the wall. Cut away the marked piece and fit the end panel in the same way as the previous panels. When cutting the panel with a utility knife, make sure that you cut through the wear layer before breaking the panel.
8. For an attractive and natural appearance, we advise to use the piece left over from row 1 as the first piece in the following rows.
9. For the second/next row, take a new panel and decide how big the first piece must be (or use one of the leftovers from previous rows). Make sure that the front seam is at least 20-30 cm different from the previous rows.



10. Fit the second row as you did for the first: start on the left hand side and slide the groove of the panel under an angle of about 25° over the tongue of the previous row, clicking the groove into the tongue by laying down the panel while pushing it firmly against the first row. Along the long edge, it is advisable to use a recoil or rubber hammer and tapping block, or cut piece of panel profile to tap the panels tightly together and to ensure the click mechanism is firmly locked.
11. Next, fit the second panel by sliding the groove under, at an angle of 25° , into the tongue of the previous row. Position the left corner of the head end against the previous panel and then drop the short side of the profile into the head end of the previous panel, push downward and press into place using a hand roller. Repeat until you reach the end of the row. Do not hammer the end joints into place.
12. Repeat steps 9 to 11 until all rows are complete, and only the last row needs to be placed.
13. To fit the last row of panels you will usually need to narrow them. Do this as follows: lay a panel on top of the previous row with the

groove towards the wall, lay another panel upside down up to the edge of the wall and mark the panel underneath. Cut the panel to size and fit the last row.

14. Doorjambs and heating pipes also need to be individually fitted. First cut the panel to the right length, then place the panel next to the object and draw the correct fitting. Next, cut the panel to size. Doorjambs can also be sawn (undercut) to size if necessary. The Design Floors Click can them be neatly installed underneath.

⇒ For smart solutions to cover the expansion gaps, see 'Finishing your floor'

Finishing your floor

Xtrafloor offers a range of smart flooring solutions to your finishing needs. The offer combines unique functionality with style: a hardwearing solution that ensures smooth transitions at all times.

How to cover the expansion gap to the wall

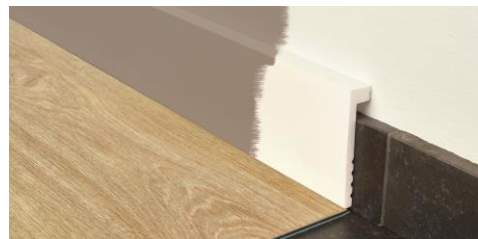
Xtrafloor standard skirting: the perfect transition

- Water-resistant
- Wear-resistant
- Perfect water-resistant corner solution



Xtrafloor paintable skirtings: style by choice

- Unique water-resistant material
- Colour coordinate your pre-primed skirting boards & walls
- Use our renovation skirting on top of existing skirting boards



Xtrafloor endprofile

- Sleek aluminium profile for a minimalistic design that lends a smart and modern look



How to cover the expansion gap under a large window frame or thresholds

- Xtrafloor end profile as recommended above



How cover the expansion gap within the floor surface, for runs longer than 20m

Xtrafloor T-profile

- Sleek aluminium profile for a minimalistic design that lends a smart and modern look
- Durable and easy solution to cover the gap between 2 adjacent floors at the same level.



How to connect your floor with higher or lower level floor surfaces

Xtrafloor Adapter profile

- Sleek aluminium profile for a minimalistic design that lends a smart and modern look
- Connect the floor with lower floor surfaces, with a height difference of max. 6mm



Xtrafloor Multifunctional profile

- Sleek aluminium profile for a minimalistic design that lends a smart and modern look
- Connect the floor with any other type of higher or lower lying floor surface, with a height difference up to 12.3mm



How to finish your stairs in the same material as the floor

Xtrafloor stairnosing:

- Sleek aluminium profile for a minimalistic design that lends a smart and modern look
- Inner and outer corner stair nosing for LVT dryback and click

Note: Design Floors Click must be adhered to the treads and risers on stairs.



⇒ For specific installation instructions on Xtrafloor skirting, profiles and nosings, please consult www.Xtrafloor.com

Maintaining your floor

Appropriate maintenance procedures will help to preserve the appearance and will extend the life of a Design Floors. The frequency of maintenance will depend on the amount and type of traffic, degree of soiling, the floor colour and type. Design Floors have a Protectonite-PU lacquer on top of the resistant wear layer. This lacquer protects against soiling and makes overall maintenance easier. Protectonite also makes any post-treatment with protection polish unnecessary.

External conditions

The appropriate management of external conditions can help to protect the flooring, which saves time and expenses on cleaning and maintenance, and also extends its lifespan. Most soiling comes from an external source and is transported indoors by foot and rolling traffic. If dirt lodges under sliding furniture, the flooring will not only be soiled but will also suffer (light) damage in the form of scratches.

Entrance mats

A proper clean-off zone/mat is strongly recommended. It will reduce the soiling of the flooring by as much as 70%. Entrance mats, when properly serviced, can effectively remove abrasive materials from foot traffic and reduce the amount of transferred water. Design Floors recommends a minimum of two full strides of entrance matting.

Where possible, prevent dirt from reaching the floor. A suitable barrier matting system will help prevent soiling and abrasive material from entering a building, assisting cleaning and maintenance.

Regularly clean the clean-off zone matting so that it functions optimally. Replace the clean-off mat when necessary..

Avoid rubber or latex backed mats, rubber furniture feet and castors, as these may leave permanent stains.

Important

- Take care to immediately wipe up any spillages on the vinyl flooring to minimize the risk of permanent staining occurring.
- Vinyl flooring can be slippery when wet.
- If the use of a neutral pH detergent is necessary then carefully follow the dilution recommendations of the manufacturer
- After cleaning, the floor should be dry within 1 or 2 minutes so there is no residual water with cleaning detergent and dirt remaining on the floor.

Protection of sliding furniture

Place good quality protective felt pads under chair and table legs. Furniture cups should be used to avoid high point loading

Regular cleaning

Remove daily dirt

- Sweeping
- Dry mopping
- Vacuum cleaning

Spot and stain removal

- Damp cloth
- Hand pad

Damp mopping

- Microfibre damp mop
- Traditional mop (as dry as possible)

Occasional cleaning

Mopping

- Damp mopping
- Traditional mopping (as dry as possible)

Combine machine

- Red scrub pad
- Neutral detergent
- Low amount of water!

Maintenance

Spray cleaning

- High-speed (450 rpm)
- Red drybuff pad
- Spray bottle with neutral detergent



Camouflage minor scratches

- High-speed (450 rpm)
- PU refresher
- Red drybuff pad
- Cotton cloths

Recommended maintenance products

Choose Xtrafloor's maintenance products, specially developed, and prolong the life of your Design Floors.

www.xtrafloor.com

Important part from the warranty:

- Almost all flooring will vary in colour over time when exposed to UV light. Avoid this by using curtains or sunscreens when the sun is very bright.
- Avoid rubber or latex backed mats as they may leave stains. Also rubber and latex castors (we advice castors type 'W' in accordance with EN 12529) or protection caps under furniture cannot be used.
- Protect against scratching from furniture feet by using wide free-moving castors, glides, rollers or felt pads. Use furniture caps under heavy items or appliances to prevent indentation.
- In case of loose lay installation, damage of the vinyl flooring caused by heavy overload or sliding activities is not covered by the warranty conditions.
- Do not allow cigarettes, matches and other very hot items to contact the floor as this causes permanent damage.

Important: Cleaning or maintenance may only take place if the Design Floors are correctly installed and there are no visible imperfections.

Contact your Design Floors representative / retailer for the complete warranty conditions

March 2019